

TOP Le Tour de Noë les Mallets

↔ 4 mi

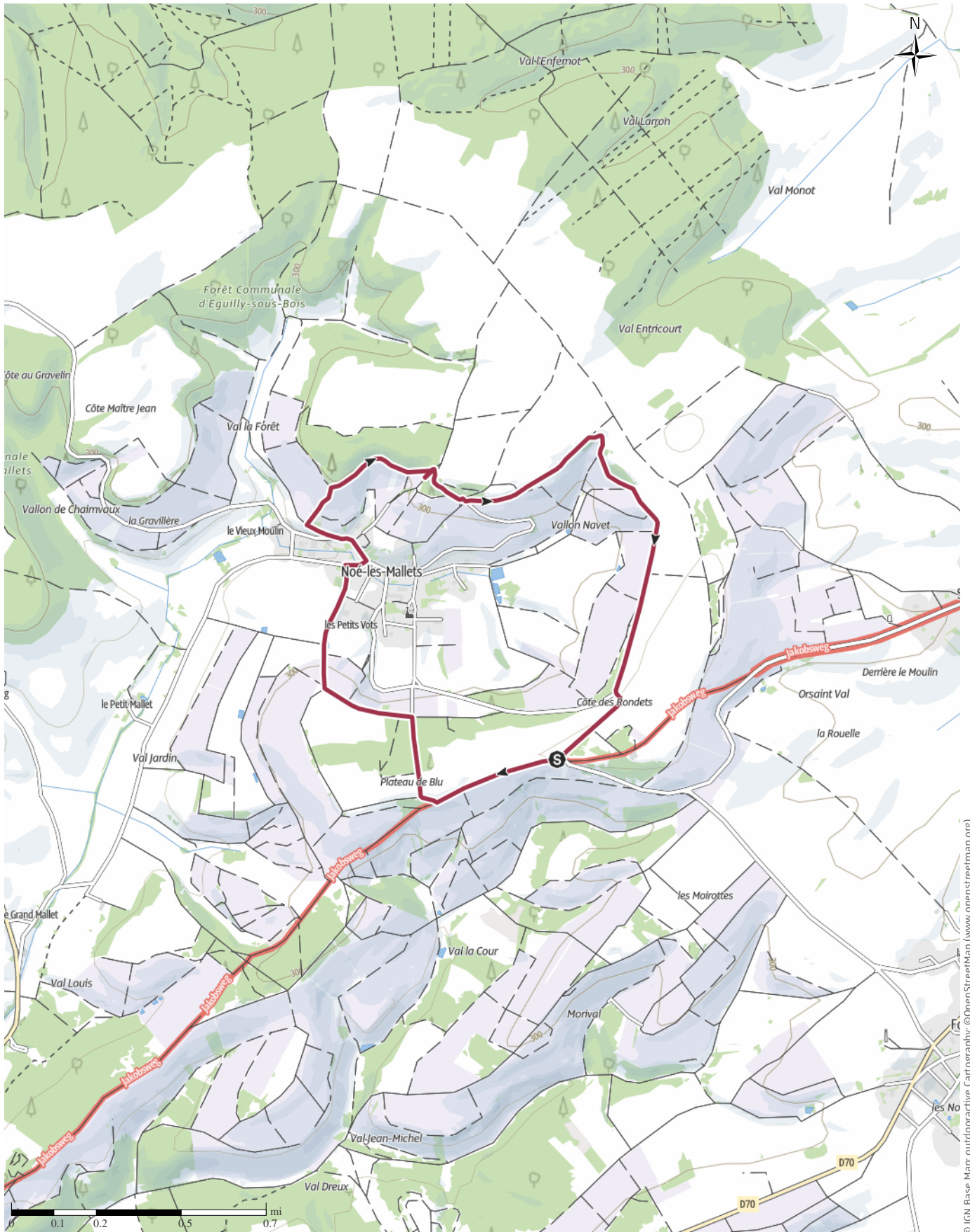
🕒 1:45 h

▲ 331ft

▼ 331ft

Difficulty

easy



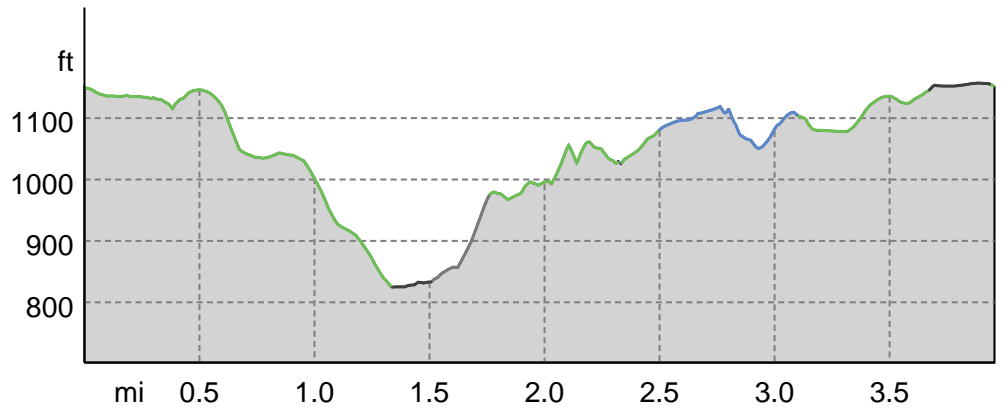
© IGN Base Map: outdooractive Cartography, ©OpenStreetMap (www.openstreetmap.org)

TOP Le Tour de Noë les Mallets

Track types

Asphalt	0.3 mi
Dirt road	0.6 mi
Forested/wild trail	2.6 mi
Road	0.4 mi

Elevation profile



route data

Hiking route

Distance	↔	4 mi
Duration	🕒	1:45 h
Ascent	▲	331 ft
Descent	▼	331 ft

Difficulty easy

Stamina

Technique

Altitude

Best time of year

JAN	FEB	MAR
APR	MAY	JUN
JUL	AUG	SEP
OCT	NOV	DEC

Ratings

Authors ●●●●●

Experience ●●●●●

Landscape ●●●●●

Community

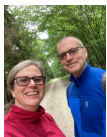
More route data

Properties

Dog-friendly	Scenic
Geological highlights	'Healthy climate'
Suitable for strollers	

Awards

- Circular route
- Family-friendly



Brian and Jo Simpson

Update: January 02, 2023

A beautiful circular walk around the village of Noë les Mallets with spectacular views from Plateau de Blu, with a picnic area.

The route takes you along the sides of the vineyards, down through a small wooded area with views over the village. After dropping down into the village you climb

up to the other side, where you follow the path back round to Plateau de Blu, with spectacular views across the Côte des Bar, which are especially beautiful at sunset.

Author's recommendation

*Good in any weather.*

Turn-by-turn directions

Starting point / trailhead

The point de vue at Plateau de Blu

Coordinates:

DD: 48.092813, 4.580527

DMS: 48°05'34.1"N 4°34'49.9"E

UTM: 31U 617687 5327824

w3w: ///quad.targeting.harvested

Point of arrival

Circular walk around the village of Noë les Mallets.

Getting There

**TOP** Le Tour de Noë les Mallets

**Getting there**

Drive to Plateau de Blu where there is ample parking.

**Parking**

Good.

**Takeaway route for iPhone and Android**



Scan QR code, save this route offline, share with friends and more...

Website

<https://out.ac/IFmzhT>